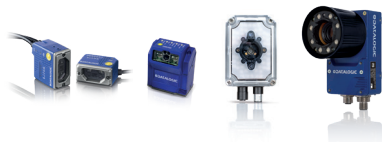


Technical Data

USER INTERFACE	GUI Languages	English, Italian, German, Spanish, French, Polish, Japanese, Traditional Chinese, Simplified Chinese, Korean
	OS Supported	Windows XP, Win 7, Win 8, Win 10
	Access Control	Password protected user levels
CHARACTER TYPE	Font	True Type, Open Type, Type1, Type42, Single Line Fonts
	Language Support	Full unicode language support
	Text	Fixed text, linear and radial text, customizable date/time objects, serial number, batch code, fully customizable code
CODE TYPE	Bar Codes	2to5, Code 39, Code 128, UPC, EAN (GS1 ready)
	Stacked Codes	PDF417, Code 16K, RSS Family
	Matrix Code	Data Matrix, QR Code, Micro QR
DRAWING CAPABILITIES	Logo image types	HPGL, PLT, DXF, AI, PDF, DWG, BMP, JPG, TIF, GIF, PNG
	Draws	Multi shape editor with mode editing
	Filling	Single, cross, triple lines filling, advanced spiral and pocketing with Filling Marking preview editor
	Array	Customizable Grid Array
AUTOMATION	Operating Mode	Stand-Alone, Master-Slave
	Mechanical Axis	Embedded step motor controller for 4 external axis (x, y, z) and Rotary axis
	Programmable Interface	ActiveX, Scripting, Sequence Builder
	Communication Protocols	Ethernet TCP/IP, Ethernet IP, RS-232
MATRIX N SERIES CONTROLS	Photometry	Exposure time, Gain, Internal/External LED lighting control
	Reading Distance	Adjustable, Autofocus on liquid lens Models
	Quality Training	Full 7 metrics code quality analysis
		Overall and Customized Quality Grade Profile
	Image Storage	User defined storage pool with FIFO (First in First out) management

The Lighter Suite is included in the Standard Package of all DLA Laser Marking products:

MATRIX N SERIES



AREX



UNIQ



VLASE



New versions of Lighter Suite are released periodically. Download the latest release and upgrading information at: www.datalogic.com. Lighter Suite includes a free 30-day MARVIS trial. After the 30-day trial period has expired, MARVIS will be automatically deactivated and the trial version becomes a standard, fully functional Lighter Suite version. To buy an unlimited (non-expiring) MARVIS license, please contact your local Datalogic office.



Rev. 00, 01/2018

www.datalogic.com



> Lighter MARVIS
Mark and Validate in one click

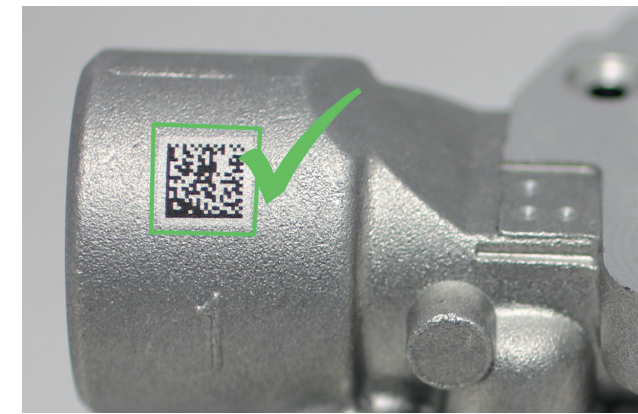




One suite to ensure
your DPM traceability

Lighter Suite is the all-inclusive editing and laser management software for all Datalogic Laser Marking products.

Lighter Suite with its innovative approach focused on the user experience is revolutionizing Laser Marking management; the powerful and simple interface, the flexible and comprehensive customization capabilities and effective production tools represent an important step-ahead in traceability and branding industrial applications.



LIGHTER Suite combines into an unified GUI (Graphical User Interface) a powerful vectorial graphical editor, an advanced laser controller and the innovative MARVIS™ (MARK Read Verify Integrated Solution) feature to seamless interact with AutoID code reader for in-line validation of marked traceability codes.

MARVIS™ connects any Datalogic MATRIX N-series reader with any laser marker, enabling controlling from one single interface and enhancing individual products' performances.

MARVIS is also available as update for existing products.

1 MARVIS is part of Lighter Suite and is available for free trials for 30 days (License sold separately).

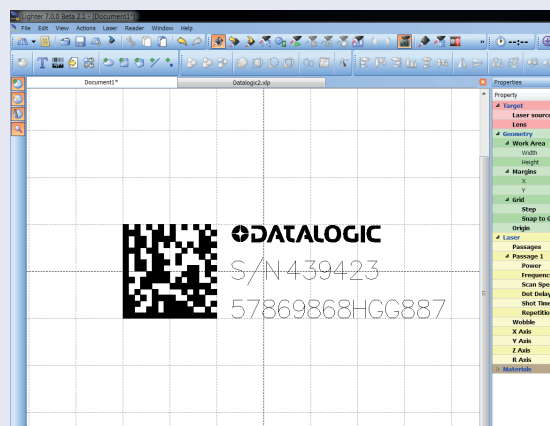
Object-Oriented Configuration



In the Lighter Suite, each object is associated with specific LASER parameters and READER configuration; loading a graphical layout will automatically retrieve and update laser and reader configurations.

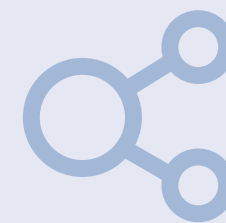
Product reconfiguration or format changes are as simple as loading a graphical layout.

Advanced Editing Function



- Easily create, import and edit texts, shapes and logos
- One-click code generator for 1D and 2D symbologies
- Object-related Property Browser for fast adjustment of Marker and Reader parameters
- Imports Bitmap and Vector files (DXF, DWG, PLT, PDF, AI, SVG, BMP, JPG, PNG and TIFF...)
- Advanced filling featured with various laser-optimized patterns

Connectivity



The **LIGHTER Suite** allows OEMs and Machine builders to develop a complete and cost effective Laser Marking Station, based on embedded hardware and software resources (such as STAND ALONE mode) or to design an advanced Laser Marking Solution able to control machinery over a simple Ethernet connection with a supervisor computer (MASTER-SLAVE mode).

Lighter Suite natively embeds Ethernet TCP/IP and EtherNet/IP protocols.

Scripting programmability



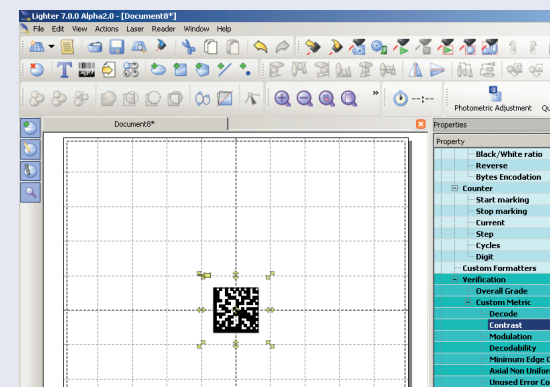
The LIGHTER Suite integrates the IDE (Integrated Development Environment) providing the users with a full set of tools to be used for extremely flexible customization.

The programming language is ECMAScript (also called JavaScript).

With Project Editor it is possible to:

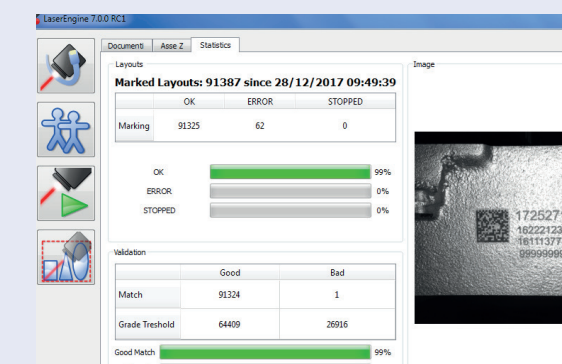
- Control the entire marking process
- Create and fully customize marking layout and its content at runtime
- Interact with local or centralized databases
- Create alternative customized interfaces
- Interact with Third Party devices

Integrated Configuration And Setup



- IP address discovery and connection management
- Dedicated Digital output for in-line parts selection
- Dedicated Digital input for deferred reader trigger
- Configurable images storage pool
- New Code Quality Training feature to automatically define code quality threshold from "Golden Sample"
- Patent Pending "Quality Grade Metric Profile" (QGP)

Runtime Production Statistics and Reports



Built-in validation statistics dashboard.
Configurable log file with Quality Reporting and code images.