

Unpacking

- Carefully remove all protective material from the V5100 and save the shipping container for later storage and shipping .
- Verify that the following were received.

- Power adapter x1
- USB data cable x1
- V5100 handheld Terminal x1
- 4500mAh Lithium-ion battery

- Inspect the equipment for damage. If any equipment is missing or damaged, contact the local service center immediately.
- Prior to using the V5100 for the first, remove the protective shipping film that covers the display window.

Appearance and Buttons

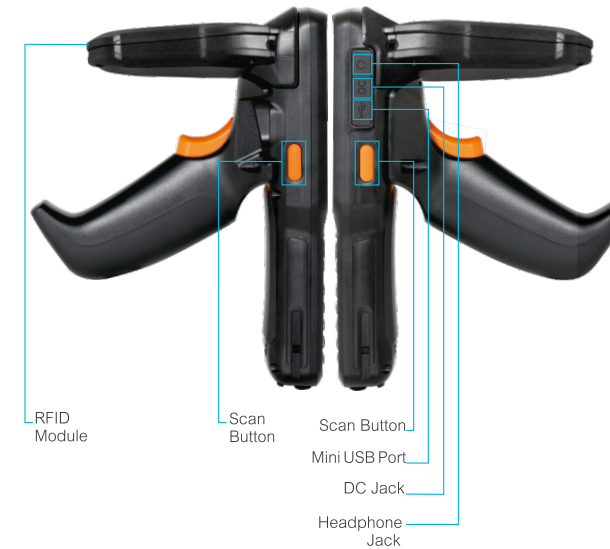
Front view



Back view



Side view



Features

- Batter release latches: Dig to remove the battery.
- Power button: Turns the display on and off. Press and hold to reset the device, power off or swap battery.
- Microphone: Use for communications in headset mode.
- Touch screen: Displays all information needed to operate.
- Charging LED: Indicates battery charging status while charging.
- Notification LED: Indicates system status while application generated notifications(programmable).
- Custom button: The key value can be programmed by user.
- RFID reader antenna: Provide communication with RFID Tag.
- Pogo pin: Provide charging with cradle.
- Trigger button: Trigger scan button with handle.
- Speaker: Provides audio out-put for video and music playback.
- Scan window: Provide data capture using the scanner.

Indicators

Battery		Power high/AC adaptor Connected without battery inside
		Power medium
		Charging while Battery is medium or low
		Power low
Network signal strength		Good signal
		Fair signal
		No sim card
		Sim card error/No service
WiFi		WiFi on but not connected any WiFi network
		WiFi ON and connected
		WiFi off

Setup your Device

Installing a SIM Card

- Only use a Standard SIM card.
- Press battery latches and lift the battery to remove it.
- Slide the SIM Card into the corresponding slots with contacts facing down.
- Press and pull the card to remove.



Installing a Micro-SD Card

- Slide the micro-SD card holder to Open position.
- Lift the micro-SD card holder.
- Slide the SIM Card into the corresponding slots with contacts facing down.
- Close the micro-SD card holder and slide to Lock position.

Note:
Overexertion should be avoid when installing or removing the card.

Installing the Battery

1. Insert the battery, top first, into the battery compartment in the back of the V5100.
2. Press the battery down into the battery compartment until the battery release latches snap into place.



Standard Cradle

- 1-Slot Only Cradle with Battery Charger:
- Provides 5VDC power for operating the V5100.
 - Simultaneously charges up to 1 V5100 and 1 battery using the standard cradle.



Power LED Charging LED



Battery Slot
Device Slot

Device Charging

1. Insert the V5100 into a slot to begin charging.
2. Ensure the V5100 is seated properly

Battery Charging

The device's Charging/Notification LED indicates the status of the battery charging in the device. See table below for device charging status.

Off		Cradle is not powered.
Power LED		No spare battery in slot; Spare battery not placed correctly.
Solid Red		Spare battery is charging.
Solid Green		Spare battery charging is complete.

Note:

This cradle is an optional accessory.

4 - Slot Battery Charger



- Simultaneously charges up to 4 battery using the standard cradle.

Lanyard

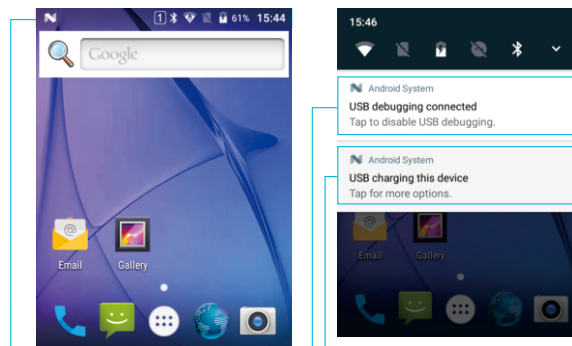


UHF Module & Gun Grip



Connecting to PC

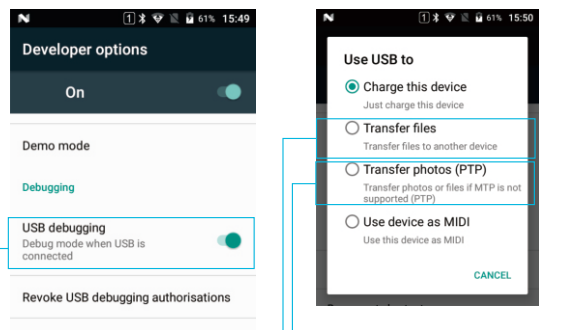
After you install the Android driver or an Android smart phone assistant, you can connect the devices to your PC with USB cable provided. (You can download the software mentioned above from www.urovo.com/en. After device connected to your PC, the screen would display like this:



Tap the top of the screen, drag downwards and the USB setting interface will appear.

Click on this to go the next right interface

Click on this to go the next left interface



To turn on debug mode

To transfer pictures

Open the device memory and removable disk

Device Care & Maintenance

Read all information before using the device to ensure safe and proper operation. Following are the warning information provided below to prevent incidents such as fire or explosion.

Warning

- Using unapproved power source, charger or battery may cause fire, explosion or other risks.
- Please use the accessories approved by manufacturer and corresponding to this model.

Using other chargers may cause electrical leakage, fire, or damage to equipment and chargers.

- If charging is completed, remove the charger from the device and unplug the charger from the power outlet. Do not charge more than 12 hours.

- Do not expose to physical impact or damage.
- Do not use outdoor during a thunderstorm.
- Turn off the device before storage to prevent the battery to be completely drained.

Do not expose to high temperatures, battery overheating may cause an explosion.

- Do not use the battery if the battery appears discoloration, deformation, abnormal heating, expansion and other phenomena.
- Stop using and disconnect all connections to other devices or cables before cleaning and maintaining the equipment.
- Do not touch the device with wet hands. Also, do not use the device in humid environments, such as rest rooms, or during water-base activities, such as swimming.

· It is recommended to use your device at temperature between 5 ~35 °C (41~95°F) .

· Do not store the device near or in heaters, microwave, cooking equipment, or high pressure containers.

- Keep the device dry.

· Do not use the device in the environment of potential explosion risk (including the gas station, below the deck of the ship, near the transportation or storage facilities of fuel or chemicals, and the area in the air containing chemicals or grains, metal powder and other particles).

Children

- 1) Do not allow children or pets to bite or suck the device.
- 2) Do not poke eyes, ears, or other body parts with the device or insert the device into the mouth.
- 3) If the device has a camera flash, do not use it close to the eyes of people or animals.

Transport Precautions

Do not transport the battery at ambient temperature higher than 65 °C (149 °F).

Please keep device and battery separately during storage
Pack battery with appropriate packing materials.

Liability Disclaimer

UROVO Technologies takes steps to ensure that its published Engineering specifications and manuals are correct ,however, error do occur. UROVO Technologies reserves the right to correct any such errors and disclaim liability resulting therefrom.

Return & Recycle

This marking on the product accessories or literature indicates that the product and its electronic accessories (such as charger) should not be disposed with other household waste.

This product is ROHS compliant.

Help&Support

EMAIL US AT tech@urovo.com

CALL US ON +86-755-22673926

www.urovo.com/en

Floor 36, Hitech Zone Union Tower, No.63 Xuefu Road, Nanshan District, Shenzhen, China