

TX Series

INDUSTRIAL BARCODE LABEL PRINTER



RUGGED
PARTS
DURABLE
MACHINES
SURPASSING
PERFORMANCE

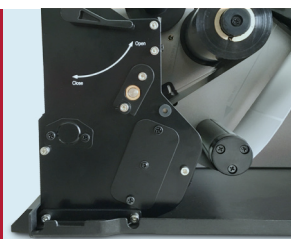
NEW TPH Pressure
Adjusting
exceptional printing
quality



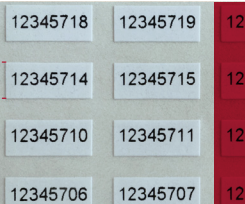
Up/Down Reflective
Media Sensor
super media
compatibility



Fixed Metal
Chassis Frame
stable performance
to handle heavy
workloads



5mm



Super accurate
media detection
extra-small label
printing

FAST AND INTELLIGENT INDUSTRIAL-GRADE PRINTING SOLUTION

The original design of TX Series has been taken into account various elements that define an industrial printer: handling ability and memory, media compatibility and loading capacity, speed and performance, printing effect, interface and optional items. We always take the challenge to achieve the most advanced and appropriate design for each parts, as well as the integration that are proved to be an outstanding product.

The metal-framed composition carries all advanced techniques that function in actual performance, producing flash-speed, steady and reliable printing, remarkable print quality, smart and intelligent solution, and compatibility with popular printer control languages.

BENEFITS

TX series can meet your printing needs of stability and reliability, as well as flash-speed and premium performance. The powerful CPU capacity and rugged parts work together to achieve the optimal outcome and significantly increased print efficiency.

Fixed chassis frame and metal construction fulfils strong structure that supports heavy printing workloads.

TX Series can automatically detect and support popular printer control languages (e.g PPL-E, PPL-Z) to accommodate the ease of replacing other mainstream brand printers.

National patented "Up/Down Reflective Media Sensors" and precisely designed mechanism work together to enable the stronger media compatibility and ensure accurate media detection, which can print very small labels down to 5mm in height.

Multiple interface modes are available for varies print applications and environment, which provide more choices for your print needs.

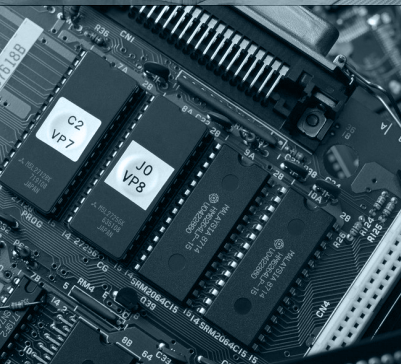
SPECIFICATIONS

Model	TX2	TX3	TX6
Printing Method	Thermal Transfer		
Printing Resolution	203 dpi	300 dpi	600 dpi
Max Printing Speed	12 ips (304.8 mm/s)	10 ips (254 mm/s)	6 ips (152.4 mm/s)
Max Printing Width	4.09" (104 mm)	4.17" (106 mm)	4.17" (106 mm)
Max Printing Length	157" (4000 mm)	79" (2000 mm)	19.6" (500 mm)
Memory	8 MB FLASH ROM, 16 MB SDRAM		
Media	Width: 4.56" (116 mm) max. 0.79" (20 mm) min. OD: 8" (203.2 mm) max. ID: 1.5" (38 mm) min.	Width: 4.56" (116 mm) max., 0.98" (25mm) min. OD: 8" (203.2 mm) max. ID: 3" (76.2 mm) min.	
Media Thickness	0.0024" (0.06 mm) ~ 0.012" (0.305 mm), including liner		
Ribbon	Ribbon roll: OD: 3.3" (84 mm) max., ID: 1" (25.4 mm) min. Max width: 4.65" (118 mm), Max length: 1968' (600 M), Ink side: both In and Out.		
Media Sensor	Up&Down Reflective (Adjustable) / Transmissive (Adjustable)		
Fonts	PPL-E: Five built-in dot matrix ASCII fonts, Downloadable TrueType Fonts PPL-Z: Seven built-in dot matrix ASCII fonts and one scalable font, Downloadable TrueType Fonts		
Bar Code Types	1D Barcode: Code 39, Code 93, Code 128/subset A, B, C, Codabar, Interleave 2 of 5, UPC A/E 2 and 5 add-on, EAN-13/8/128, UCC-128, etc. 2D Barcode: MaxiCode, PDF417, Data Matrix, QR, etc.		
Interfaces	RS-232 Serial, 10/100 M-bit Ethernet, USB DEVICE 2.0, USB HOST, Centronics Parallel		
LCD Display	Graphic Dot Matrix		
Power Rating	110/220 VAC \pm 10%, 50/60 Hz		
Weight	15 kgs		
Dimensions	W 11.3" (286 mm) x D 17.6" (448 mm) x H 11.0" (280 mm)		
Operating Environment	Temperature: 32°F ~ +104°F (0°C ~ 40°C), Relative humidity: 5% ~ 85% non condensing		
Storage Environment	Temperature: -40°F ~ +140°F (-40°C ~ 60°C), Relative humidity: 5% ~ 85% non condensing		
Optional Items	External Rewinder, Rotary Cutter		

* All specifications are subject to change without notice.

APPLICATIONS

Industrial Machinery
Electronics
...



SAMPLES

MODEL	EC5805	CDLOR	BLACK
MEID	A000001AD83039		
RSN	RHWCD03210015473		
S/N	EV2AB10E7160042		
SKU	CDH-W0521		

100000120	100000121
100000122	100000123
100000124	100000125

A-B 2Y	12345678
A-B 2Y	12345679
A-B 2Y	12345680
A-B 2Y	12345681
A-B 2Y	12345682

POSTEK

POSTEK ELECTRONICS CO., LTD.

Wisdom Plaza, Block B, Tower 2, 18th Floor
Qiaoxiang Road, Nanshan District, Shen Zhen,
Guang Dong, China

T +86-755-83240988
F +86-755-83202898

WWW.POSTEKTECHNOLOGIES.COM